



ಕೆಐಡಿಬಿ

ಕರ್ನಾಟಕ ಕೈಗಾರಿಕಾ ಪ್ರದೇಶಾಭಿವೃದ್ಧಿ ಮಂಡಳಿ

(ಕರ್ನಾಟಕ ಸರ್ಕಾರದ ಒಂದು ಅಧೀನ ಸಂಸ್ಥೆ)

ವಸತಿ ಗೃಹಗಳ ಇ-ಹರಾಜು



ಸ್ಥಳ: 9

ಕ್ರಮ ಸಂಖ್ಯೆ	ಮನೆಗಳ ವಿವರಗಳು	ಯುನಿಟ್‌ಗಳ ಸಂಖ್ಯೆ	ಪ್ಲಾಟ್ ನ ಅಳತೆ ಚದರ ಮೀಟರ್ ನಲ್ಲಿ	ಮನೆಗಳ ನಿರ್ಮಿತ ಪ್ರದೇಶ ಚದರ ಮೀಟರುಗಳಲ್ಲಿ
1	LIG	108	9x12m	56.54
2	MIG	48	9x15m	66.89
3	HIG	16	12x18m	105.92

ರಾಯಚೂರು ನಗರದ ಕೆಐಡಿಬಿಯ
ವಸತಿ ಬಡಾವಣೆ ಪ್ರದೇಶ

- ರಾಯಚೂರು ನಗರಸಭೆ ವ್ಯಾಪ್ತಿಯಲ್ಲಿ ಎಲ್ಲಾ ನಾಗರಿಕ ಸೌಲಭ್ಯಗಳೊಂದಿಗೆ ಉತ್ತಮವಾಗಿ ಅಭಿವೃದ್ಧಿ ಹೊಂದಿದ ವಸತಿ ಲೇಔಟ್.
- ನಿರ್ಮಾಣಗೊಂಡಿರುವ ಮತ್ತು ವಾಸಕ್ಕೆ ಸಿದ್ಧವಾಗಿರುವ ಮನೆಗಳು.
- ವ್ಯಾಜ್ಯ ಮುಕ್ತ ಮತ್ತು ಸ್ಪಷ್ಟ ಹಕ್ಕುಪತ್ರಗಳ ಜೊತೆಗೆ 24/7 ವಿದ್ಯುತ್ ಮತ್ತು ನೀರಿನ ಲಭ್ಯತೆ.
- ಪ್ರಮುಖ ಶಿಕ್ಷಣ ಸಂಸ್ಥೆಗಳಿಗೆ ಸಮೀಪದಲ್ಲಿದ್ದ ಹಾಗೂ ಉತ್ತಮ ಸಂಪರ್ಕ ಮತ್ತು ಪ್ರವೇಶಾವಕಾಶ ಹೊಂದಿರುತ್ತದೆ.



HIG



MIG



ರಾಯಚೂರು ವಸತಿ ಬಡಾವಣೆ ಪ್ರದೇಶ



LIG

ಇ-ಹರಾಜಿಗಾಗಿ ಸಾಮಾನ್ಯ ನಿಯಮಗಳು ಮತ್ತು ಷರತ್ತುಗಳಿಗಾಗಿ,
ನಮ್ಮ ವೆಬ್‌ಸೈಟ್‌ಗೆ ಭೇಟಿ ನೀಡಿ: ವೆಬ್‌ಸೈಟ್: www.kiadb.in
ಇ-ಪ್ರೊಕ್ಯೂರ್‌ಮೆಂಟ್ ಪೋರ್ಟಲ್: <https://kppp.karnataka.gov.in>ಗೆ
ಭೇಟಿ ನೀಡಿ, ಬಿಡ್ ಸಲ್ಲಿಸಲು ದಿನಾಂಕ: 04.10.2023 ರಿಂದ ಮಾಡಬಹುದು.

ಹೆಚ್ಚಿನ ವಿವರಗಳಿಗಾಗಿ, ಕೆಐಡಿಬಿ ಅನ್ನು ಸಂಪರ್ಕಿಸಿ:

ಕೆಐಡಿಬಿ, ವಲಯ ಕಚೇರಿ, ರಾಯಚೂರು,

ಪ್ಲಾಟ್ ಸಂಖ್ಯೆ 49, ಹೈದರಾಬಾದ್ ರಸ್ತೆ, ರಾಯಚೂರು

ಇಮೇಲ್: doballari@kiadb.in

ವೆಬ್‌ಸೈಟ್: www.kiadb.in

ಸಂಪರ್ಕದ ವಿವರಗಳು: 8431496301 / 7975234573 / 9448109286



Karnataka Industrial Areas Development Board

(A Government of Karnataka Undertaking)

e-AUCTION of Residential Houses



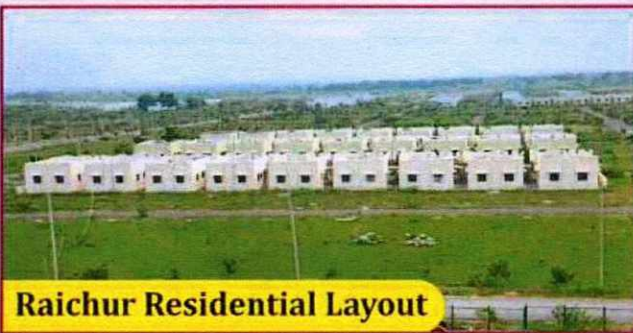
Location



Residential Layout Area of KIADB, Raichur City

Sl. No	House Details	No. of Units	Plot size in Sq. mtr	Built up Area of House (Sq.mtr)
1	LIG	108	9x12m	56.54
2	MIG	48	9x15m	66.89
3	HIG	16	12x18m	105.92

- Well developed Housing layout within the Municipal area limits of Raichur city with all civic amenities.
- Ready Built & Ready to Occupy Houses.
- Litigation free and clear title with Availability of 24/7 Electricity and Water.
- Close to prestigious educational institutes with good connectivity and accessibility.



Raichur Residential Layout



HIG



MIG



LIG

For General Terms and Conditions for e-AUCTION, visit our website: www.kiadb.in

For Participating in e-auction, Please Visit e-procurement Portal: <https://kppp.karnataka.gov.in> from **04.10.2023** onwards.

For More Details, Contact KIADB:

KIADB, Zonal Office, Raichur

Plot No. 49, Hyderabad Road, Raichur,

Email – doballari@kiadb.in

Website: www.kiadb.in

Contact Details: 84314 96301 / 79752 34573 / 94481 09286



ಕೆಐಡಿಬಿ

ಕರ್ನಾಟಕ ಕೈಗಾರಿಕಾ ಪ್ರದೇಶಾಭಿವೃದ್ಧಿ ಮಂಡಳಿ

(ಕರ್ನಾಟಕ ಸರ್ಕಾರದ ಒಂದು ಅಧೀನ ಸಂಸ್ಥೆ)



ವಸತಿ ಗೃಹಗಳ ಇ-ಹರಾಜು

ಸ್ಥಳ : ೧

ಕ್ರಮ ಸಂಖ್ಯೆ	ಮನೆಗಳ ವಿವರಗಳು	ಯುನಿಟ್‌ಗಳ ಸಂಖ್ಯೆ	ಪ್ಲಾಟ್ ನ ಅಳತೆ ಚದರ ಮೀಟರ್ ನಲ್ಲಿ	ಮನೆಗಳ ನಿರ್ಮಿತ ಪ್ರದೇಶ ಚದರ ಮೀಟರುಗಳಲ್ಲಿ
1	LIG	50	9x12m	52.20
2	MIG	20	9x15m	78.95
3	HIG	44	12x18m	99.86

ವಸಂತನರಸಾಪುರ
ಕೈಗಾರಿಕಾ ಪ್ರದೇಶ, 3ನೇ ಹಂತ,
ತುಮಕೂರು ಜಿಲ್ಲೆ

ವಸತಿ ಲೇಔಟ್ ಸಿಬಿಐಸಿಯ ಪ್ರಮುಖ
ಕೈಗಾರಿಕಾ ಬೆಳವಣಿಗೆಯ ಕಾರಿಡಾರ್ ಗೆ
ಹತ್ತಿರದಲ್ಲಿದೆ.

ನಿರ್ಮಾಣಗೊಂಡಿರುವ ಮತ್ತು ವಾಸಕ್ಕೆ
ಸಿದ್ಧವಾಗಿರುವ ಮನೆಗಳು.

ವ್ಯಾಜ್ಯ ಮುಕ್ತ ಮತ್ತು ಸ್ಪಷ್ಟ ಹಕ್ಕುಪತ್ರಗಳ
ಜೊತೆಗೆ 24/7 ವಿದ್ಯುತ್ ಮತ್ತು ನೀರಿನ ಲಭ್ಯತೆ.



ವಸಂತನರಸಾಪುರ

ಇ-ಹರಾಜಿಗಾಗಿ ಸಾಮಾನ್ಯ ನಿಯಮಗಳು ಮತ್ತು ಷರತ್ತುಗಳಿಗಾಗಿ,
ನಮ್ಮ ವೆಬ್‌ಸೈಟ್‌ಗೆ ಭೇಟಿ ನೀಡಿ: ವೆಬ್‌ಸೈಟ್ : www.kiadb.in
ಇ-ಪ್ರೊಕ್ಯೂರ್‌ಮೆಂಟ್ ಪೋರ್ಟಲ್ : <https://kppp.karnataka.gov.in>ಗೆ
ಭೇಟಿ ನೀಡಿ, ಬಿಡ್ ಸಲ್ಲಿಸಲು ದಿನಾಂಕ: 04.10.2023 ರಿಂದ ಮಾಡಬಹುದು.

ಹೆಚ್ಚಿನ ವಿವರಗಳಿಗಾಗಿ, ಕೆಐಡಿಬಿ‌ನ ಸಂಪರ್ಕಿಸಿ:

ಕೆಐಡಿಬಿ, ವಲಯ ಕಚೇರಿ, ತುಮಕೂರು,

ಮಾರುತಿ ಗ್ರೂಪ್ಸ್ ಕಟ್ಟಡ, 2ನೇ ಮಹಡಿ, ಎಸ್‌ಐಟಿ ಕಾಲೇಜು ಹತ್ತಿರ, ಮುಖ್ಯ ಗೇಟ್,

ಬಿ.ಹೆಚ್. ರಸ್ತೆ, ತುಮಕೂರು - 572103. ಇಮೇಲ್ : dotumakuru@kiadb.in

ವೆಬ್‌ಸೈಟ್ : www.kiadb.in

ಸಂಪರ್ಕದ ವಿವರಗಳು: 9902933944 / 9538746961 / 9449626995



HIG



MIG



LIG



Karnataka Industrial Areas Development Board

(A Government of Karnataka Undertaking)



Location



e-AUCTION of Residential Houses

Sl. No	House Details	No of Units	Plot size in Sq. mtr.	Built up Area of House (Sq.mtr)
1	LIG	50	9x12m	52.20
2	MIG	20	9x15m	78.95
3	HIG	44	12x18m	99.86

Residential Layout Area of Vasanthanarasapura Industrial Area, 3rd Phase, Tumakuru District

Residential Layout is in proximity of a major Industrial Growth Corridor of CBIC

Ready Built & Ready to Occupy Houses

Litigation free and Clear Title with availability of 24/7 Electricity and Water



Vasanthanarasapura

For General Terms and Conditions for e-AUCTION, visit our website: www.kiadb.in

For Participating in e-auction, Please Visit

e-procurement Portal: <https://kppp.karnataka.gov.in> from **04.10.2023** onwards.

For More Details, Contact KIADB:

KIADB, Zonal Office, Tumakuru, Maruthi Groups Building, 2nd Floor, Near SIT College, Main Gate, B.H. Road, Tumakuru - 572103.

Email - dotumakuru@kiadb.in Website: www.kiadb.in

Contact Details: 99029 33944 / 95387 46961 / 9449626995



HIG



MIG



LIG



ಕೆಐಡಿಬಿ

ಕರ್ನಾಟಕ ಕೈಗಾರಿಕಾ ಪ್ರದೇಶಾಭಿವೃದ್ಧಿ ಮಂಡಳಿ

(ಕರ್ನಾಟಕ ಸರ್ಕಾರದ ಒಂದು ಅಧೀನ ಸಂಸ್ಥೆ)

ವಸತಿ ಸಮುಚ್ಚಯಗಳ ಇ-ಹರಾಜು

ಸ್ಥಳ : 9

ಕ್ರಮ ಸಂಖ್ಯೆ	ವಸತಿ ಸಮುಚ್ಚಯದ ವಿಧ	ಮಹಡಿ	ಯುನಿಟ್‌ಗಳ ಸಂಖ್ಯೆ	ಮನೆಗಳ ನಿರ್ಮಿತ ಪ್ರದೇಶ ಚದರ ಮೀಟರುಗಳಲ್ಲಿ
1	1 BHK	ನೆಲಮಹಡಿ	36	39.48
2		ಒಂದನೇ ಮಹಡಿ	36	
3		ಎರಡನೇ ಮಹಡಿ	36	
4	2 BHK	ನೆಲಮಹಡಿ	15	53.51
5		ಒಂದನೇ ಮಹಡಿ	21	
6		ಎರಡನೇ ಮಹಡಿ	21	

ಹುಬ್ಬಳ್ಳಿ-ಧಾರವಾಡ ನಗರದ ಗಾಮನಗಟ್ಟಿ ಕೈಗಾರಿಕಾ ಪ್ರದೇಶದ ವಸತಿ ಲೇಔಟ್ ಪ್ರದೇಶ

- ಹುಬ್ಬಳ್ಳಿ ನಗರಸಭೆ ವ್ಯಾಪ್ತಿಯಲ್ಲಿ ಎಲ್ಲಾ ನಾಗರಿಕ ಸೌಲಭ್ಯಗಳೊಂದಿಗೆ ಉತ್ತಮವಾಗಿ ಅಭಿವೃದ್ಧಿ ಹೊಂದಿದ ವಸತಿ ಲೇಔಟ್.
- ನಿರ್ಮಾಣಗೊಂಡಿರುವ ಮತ್ತು ವಾಸಕ್ಕೆ ಸಿದ್ಧವಾಗಿರುವ ಮನೆಗಳು.
- ವ್ಯಾಜ್ಯ ಮುಕ್ತ ಮತ್ತು ಸ್ಪಷ್ಟ ಹಕ್ಕುಪತ್ರಗಳ ಜೊತೆಗೆ 24/7 ವಿದ್ಯುತ್ ಮತ್ತು ನೀರಿನ ಲಭ್ಯತೆ.
- ಪ್ರಮುಖ ಶಿಕ್ಷಣ ಸಂಸ್ಥೆಗಳಿಗೆ ಸಮೀಪದಲ್ಲಿದೆ ಹಾಗೂ ಉತ್ತಮ ಸಂಪರ್ಕ ಮತ್ತು ಪ್ರವೇಶಾವಕಾಶ ಹೊಂದಿರುತ್ತದೆ.

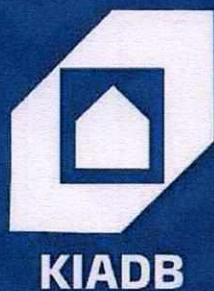


ಗಾಮನಗಟ್ಟಿ ಕೈಗಾರಿಕಾ ಪ್ರದೇಶ



ಇ-ಹರಾಜಿಗಾಗಿ ಸಾಮಾನ್ಯ ನಿಯಮಗಳು ಮತ್ತು ಷರತ್ತುಗಳಿಗಾಗಿ, ನಮ್ಮ ವೆಬ್‌ಸೈಟ್‌ಗೆ ಭೇಟಿ ನೀಡಿ: ವೆಬ್‌ಸೈಟ್ : www.kiadb.in
ಇ-ಪ್ರೋಕ್ಯೂರ್ಮೆಂಟ್ ಪೋರ್ಟಲ್ : <https://kppp.karnataka.gov.in>ಗೆ ಭೇಟಿ ನೀಡಿ, ಬಿಡ್ ಸಲ್ಲಿಸಲು ದಿನಾಂಕ: 05.10.2023 ರಿಂದ ಮಾಡಬಹುದು.

ಹೆಚ್ಚಿನ ವಿವರಗಳಿಗಾಗಿ, ಕೆಐಡಿಬಿಅನ್ನು ಸಂಪರ್ಕಿಸಿ: ಕೆಐಡಿಬಿ, ವಲಯ ಕಚೇರಿ, ಧಾರವಾಡ, ಲಕ್ಕಮ್ಮನಹಳ್ಳಿ, ಕೈಗಾರಿಕಾ ಪ್ರದೇಶ, ಪೂನಾ-ಬೆಂಗಳೂರು ರಸ್ತೆ, ಧಾರವಾಡ 560004. ಇಮೇಲ್ : dodharwad@kiadb.in ಅರ್ಜಿ ಸಲ್ಲಿಸಲು : kppp.karnataka.gov.inಗೆ ಭೇಟಿ ನೀಡಿ.
ವೆಬ್‌ಸೈಟ್ : www.kiadb.in ಸಂಪರ್ಕದ ವಿವರಗಳು: 9845806948 / 94485 80835 / 8762191753



Karnataka Industrial Areas Development Board

(A Government of Karnataka Undertaking)

e-AUCTION of Housing Tenements

Location

**Housing Layout
Area of Gamanagatti
Industrial Area,
Hubli-Dharwad
City**

Sl. No	Type of Housing Tenement	Floor	No of Units	Built up Area of House (Sq.mtr)
1	1 BHK	Ground Floor	36	39.48
2		First Floor	36	
3		Second Floor	36	
4	2 BHK	Ground Floor	15	53.51
5		First Floor	21	
6		Second floor	21	

- Well developed Housing layout within the Municipal area limits of Hubli-Dharwad City with all civic amenities
- Ready Built & Ready to Occupy Houses.
- Litigation free and clear title with Availability of 24/7 Electricity and Water
- Close to prestigious educational institutes with good connectivity and accessibility



Gamanagatti Layout

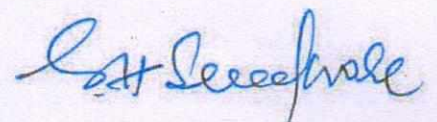


For General Terms and Conditions for e-AUCTION, visit our website: www.kiadb.in For Participating in e-auction, Please Visit e-procurement Portal: <https://kppp.karnataka.gov.in> from 05.10.2023 onwards.

For More Details, Contact KIADB: KIADB, Zonal Office, Dharwad, Lakkammanhalli, Industrial Area, Poona-Bangalore Road, Dharwad 560004. Email – dodharwad@kiadb.in Website: www.kiadb.in
Contact Details: 9845806948 / 9448580835 / 8762191753

Raichur Housing Layout Raichur						
Sl No	Type Of Housing Tenament	Plot No	Plot Size (in Mtrs)	Built Up area Sqmt	Staus (Allotted/Sale deed/To be Allotted)	Remarks
LIG Houses						
1	LIG (Page-1)	656	9X12	56.54	Allotted	Sale deed yet to be executed
2	LIG	657	9X12	56.54	Allotted	80% Amuont Balance
3	LIG	658	9X12	56.54	Allotted	80% Amuont Balance
4	LIG	659	9X12	56.54	Allotted	Sale deed yet to be executed
5	LIG	655	9X12	56.54	Sale deed
6	LIG	660	9X12	56.54	Sale deed
7	LIG	661	9X12	56.54	Sale deed
8	LIG	662	9X12	56.54	Allotted	Sale deed yet to be executed
9	LIG	663	9X12	56.54	Sale deed	Sale deed yet to be executed
10	LIG	633	9X12	56.54	Allotted	Sale deed yet to be executed
11	LIG	634	9X12	56.54	Allotted	80% Amuont Balance
12	LIG	635	9X12	56.54	Allotted	80% Amuont Balance
13	LIG	636	9X12	56.54	Allotted	Sale deed yet to be executed
14	LIG	637	9X12	56.54	Sale deed
15	LIG	638	9X12	56.54	Sale deed
16	LIG	639	9X12	56.54	Sale deed
17	LIG	640	9X12	56.54	Sale deed
18	LIG	641	9X12	56.54	Sale deed
19	LIG	347	9X12	56.54	Sale deed
20	LIG	348	9X12	56.54	Allotted	Sale deed yet to be executed
21	LIG	349	9X12	56.54	Allotted	80% Amuont Balance
22	LIG	350	9X12	56.54	Allotted	Sale deed yet to be executed
23	LIG	351	9X12	56.54	Allotted	80% Amuont Balance
24	LIG	352	9X12	56.54	Allotted	80% Amuont Balance
25	LIG	353	9X12	56.54	Allotted	80% Amuont Balance





26	LIG	354	9X12	56.54	Allotted	80% Amuont Balance
27	LIG	355	9X12	56.54	Allotted	80% Amuont Balance
28	LIG	369	9X12	56.54	Allotted	80% Amuont Balance
29	LIG	370	9X12	56.54	Allotted	80% Amuont Balance
30	LIG	371	9X12	56.54	Allotted	80% Amuont Balance
31	LIG	372	9X12	56.54	Allotted	80% Amuont Balance
32	LIG	373	9X12	56.54	Allotted	80% Amuont Balance
33	LIG	374	9X12	56.54	Allotted	80% Amuont Balance
34	LIG	375	9X12	56.54	Allotted	80% Amuont Balance
35	LIG	376	9X12	56.54	Allotted	80% Amuont Balance
36	LIG	377	9X12	56.54	Allotted	80% Amuont Balance
37	LIG	396	9X12	56.54	Vacant
38	LIG	397	9X12	56.54	Vacant
39	LIG	398	9X12	56.54	Vacant
40	LIG	399	9X12	56.54	Vacant
41	LIG	400	9X12	56.54	Vacant
42	LIG	401	9X12	56.54	Allotted	80% Amuont Balance
43	LIG	402	9X12	56.54	Allotted	80% Amuont Balance
44	LIG	403	9X12	56.54	Vacant
45	LIG	404	9X12	56.54	Allotted	80% Amuont Balance
46	LIG	405	9X12	56.54	Allotted	80% Amuont Balance
47	LIG	406	9X12	56.54	Vacant
48	LIG	407	9X12	56.54	Vacant
49	LIG	408	9X12	56.54	Allotted	80% Amuont Balance
50	LIG	409	9X12	56.54	Allotted	80% Amuont Balance
51	LIG (Page-2&3)	702	9X12	56.54	Vacant
52	LIG	703	9X12	56.54	Vacant
53	LIG	704	9X12	56.54	Vacant
54	LIG	705	9X12	56.54	Vacant
55	LIG	706	9X12	56.54	Vacant
56	LIG	707	9X12	56.54	Vacant
57	LIG	708	9X12	56.54	Vacant

[Handwritten signature]

[Handwritten signature]

58	LIG	709	9X12	56.54	Vacant
59	LIG	710	9X12	56.54	Vacant
60	LIG	711	9X12	56.54	Vacant
61	LIG	712	9X12	56.54	Vacant
62	LIG	713	9X12	56.54	Vacant
63	LIG	714	9X12	56.54	Vacant
64	LIG	715	9X12	56.54	Vacant
65	LIG	716	9X12	56.54	Vacant
66	LIG	717	9X12	56.54	Vacant
67	LIG	644	9X12	56.54	Vacant
68	LIG	645	9X12	56.54	Vacant
69	LIG	646	9X12	56.54	Vacant
70	LIG	647	9X12	56.54	Vacant
71	LIG	648	9X12	56.54	Vacant
72	LIG	649	9X12	56.54	Vacant
73	LIG	650	9X12	56.54	Vacant
74	LIG	651	9X12	56.54	Vacant
75	LIG	652	9X12	56.54	Vacant
76	LIG	418	9X12	56.54	Vacant
77	LIG	419	9X12	56.54	Vacant
78	LIG	420	9X12	56.54	Vacant
79	LIG	421	9X12	56.54	Vacant
80	LIG	422	9X12	56.54	Vacant
81	LIG	423	9X12	56.54	Vacant
82	LIG	424	9X12	56.54	Vacant
83	LIG	425	9X12	56.54	Vacant
84	LIG	426	9X12	56.54	Vacant
85	LIG	436	9X12	56.54	Vacant
86	LIG	437	9X12	56.54	Vacant
87	LIG	438	9X12	56.54	Vacant
88	LIG	439	9X12	56.54	Vacant
89	LIG	440	9X12	56.54	Vacant
90	LIG	441	9X12	56.54	Vacant
91	LIG	442	9X12	56.54	Vacant
92	LIG	443	9X12	56.54	Vacant
93	LIG	444	9X12	56.54	Vacant
94	LIG	358	9X12	56.54	Vacant
95	LIG	359	9X12	56.54	Vacant
96	LIG	360	9X12	56.54	Vacant
97	LIG	361	9X12	56.54	Vacant
98	LIG	362	9X12	56.54	Vacant

[Handwritten signature]

[Handwritten signature]

99	LIG	363	9X12	56.54	Vacant
100	LIG	364	9X12	56.54	Vacant
101	LIG	365	9X12	56.54	Vacant
102	LIG	366	9X12	56.54	Vacant
103	LIG	367	9X12	56.54	Vacant
104	LIG	368	9X12	56.54	Vacant
105	LIG	369	9X12	56.54	Vacant
106	LIG	370	9X12	56.54	Vacant
107	LIG	371	9X12	56.54	Vacant
108	LIG	372	9X12	56.54	Vacant
109	LIG	373	9X12	56.54	Vacant
110	LIG	377	9X12	56.54	Vacant
111	LIG	378	9X12	56.54	Vacant
112	LIG	379	9X12	56.54	Vacant
113	LIG	380	9X12	56.54	Vacant
114	LIG	381	9X12	56.54	Vacant
115	LIG	382	9X12	56.54	Vacant
116	LIG	383	9X12	56.54	Vacant
117	LIG	384	9X12	56.54	Vacant
118	LIG	385	9X12	56.54	Vacant
119	LIG	700	9X12	56.54	Vacant
120	LIG	701	9X12	56.54	Vacant
121	LIG	702	9X12	56.54	Vacant
122	LIG	703	9X12	56.54	Vacant
123	LIG	704	9X12	56.54	Vacant
124	LIG	707	9X12	56.54	Vacant
125	LIG	708	9X12	56.54	Vacant
126	LIG	709	9X12	56.54	Vacant
127	LIG	710	9X12	56.54	Vacant
128	LIG	711	9X12	56.54	Vacant
129	LIG	712	9X12	56.54	Vacant
130	LIG	713	9X12	56.54	Vacant
131	LIG	714	9X12	56.54	Vacant
132	LIG	715	9X12	56.54	Vacant
133	LIG	648	9X12	56.54	Vacant
134	LIG	649	9X12	56.54	Vacant
135	LIG	650	9X12	56.54	Vacant
136	LIG	651	9X12	56.54	Vacant
137	LIG	652	9X12	56.54	Vacant
138	LIG	653	9X12	56.54	Vacant
139	LIG	654	9X12	56.54	Vacant

Handwritten signature/initials

Handwritten signature/initials

140	LIG	655	9X12	56.54	Vacant
141	LIG	656	9X12	56.54	Vacant
142	LIG	531	9X12	56.54	Vacant
143	LIG	532	9X12	56.54	Vacant
144	LIG	533	9X12	56.54	Vacant
145	LIG	534	9X12	56.54	Vacant
146	LIG	535	9X12	56.54	Vacant
147	LIG	536	9X12	56.54	Vacant
148	LIG	537	9X12	56.54	Vacant
149	LIG	538	9X12	56.54	Vacant
150	LIG	539	9X12	56.54	Vacant
Total		150				
MIG Houses						
1	MIG	677	9X15	66.89	Sale deed
2	MIG	678	9X15	66.89	Sale deed
3	MIG	679	9X15	66.89	Allotted	80% Amuont Balance
4	MIG	680	9X15	66.89	Allotted	80% Amuont Balance
5	MIG	681	9X15	66.89	Allotted	80% Amuont Balance
6	MIG	682	9X15	66.89	Sale deed
7	MIG	683	9X15	66.89	Sale deed
8	MIG	684	9X15	66.89	Sale deed
9	MIG	685	9X15	66.89	Sale deed
10	MIG	303	9X15	66.89	Allotted	80% Amuont Balance
11	MIG	304	9X15	66.89	Allotted	80% Amuont Balance
12	MIG	305	9X15	66.89	Allotted	80% Amuont Balance
13	MIG	306	9X15	66.89	Allotted	80% Amuont Balance
14	MIG	307	9X15	66.89	Allotted	80% Amuont Balance
15	MIG	308	9X15	66.89	Allotted	80% Amuont Balance
16	MIG	309	9X15	66.89	Allotted	80% Amuont Balance
17	MIG	310	9X15	66.89	Allotted	80% Amuont Balance
18	MIG	311	9X15	66.89	Sale deed
19	MIG	327	9X15	66.89	Sale deed
20	MIG	328	9X15	66.89	Sale deed
21	MIG	329	9X15	66.89	Sale deed

[Signature]

[Signature]

22	MIG	330	9X15	66.89	Allotted	80% Amuont Balance
23	MIG	331	9X15	66.89	Allotted	80% Amuont Balance
24	MIG	332	9X15	66.89	Sale deed
25	MIG	333	9X15	66.89	Sale deed
26	MIG(Page-2&3)	171	9X15	66.89	Vacant
27	MIG	172	9X15	66.89	Vacant
28	MIG	173	9X15	66.89	Vacant
29	MIG	174	9X15	66.89	Vacant
30	MIG	175	9X15	66.89	Vacant
31	MIG	176	9X15	66.89	Vacant
32	MIG	177	9X15	66.89	Vacant
33	MIG	178	9X15	66.89	Vacant
34	MIG	179	9X15	66.89	Vacant
35	MIG	180	9X15	66.89	Vacant
36	MIG	181	9X15	66.89	Vacant
37	MIG	182	9X15	66.89	Vacant
38	MIG	183	9X15	66.89	Vacant
39	MIG	184	9X15	66.89	Vacant
40	MIG	185	9X15	66.89	Vacant
41	MIG	186	9X15	66.89	Vacant
42	MIG	189	9X15	66.89	Vacant
43	MIG	190	9X15	66.89	Vacant
44	MIG	191	9X15	66.89	Vacant
45	MIG	192	9X15	66.89	Vacant
46	MIG	193	9X15	66.89	Allotted	80% Amuont Balance
47	MIG	194	9X15	66.89	Allotted	80% Amuont Balance
48	MIG	195	9X15	66.89	Vacant
49	MIG	196	9X15	66.89	Vacant
50	MIG	197	9X15	66.89	Vacant
51	MIG	298	9X15	66.89	Vacant
52	MIG	299	9X15	66.89	Vacant
53	MIG	300	9X15	66.89	Vacant
54	MIG	301	9X15	66.89	Vacant
55	MIG	302	9X15	66.89	Vacant
56	MIG	303	9X15	66.89	Vacant
57	MIG	304	9X15	66.89	Vacant
58	MIG	305	9X15	66.89	Vacant
59	MIG	306	9X15	66.89	Vacant

[Handwritten signature]

[Handwritten signature]

60	MIG	307	9X15	66.89	Vacant
61	MIG	308	9X15	66.89	Vacant
62	MIG	760	9X15	66.89	Vacant
63	MIG	761	9X15	66.89	Vacant
64	MIG	762	9X15	66.89	Vacant
65	MIG	763	9X15	66.89	Vacant
66	MIG	764	9X15	66.89	Vacant
67	MIG	767	9X15	66.89	Vacant
68	MIG	768	9X15	66.89	Vacant
69	MIG	769	9X15	66.89	Vacant
70	MIG	770	9X15	66.89	Vacant
71	MIG	771	9X15	66.89	Vacant
72	MIG	772	9X15	66.89	Vacant
73	MIG	773	9X15	66.89	Vacant
74	MIG	774	9X15	66.89	Vacant
75	MIG	775	9X15	66.89	Vacant
Total		75				
HIG Houses						
1	HIG	514	12X18	105.92	Vacant
2	HIG	515	12X18	105.92	Allotted	80% Amuont Balance
3	HIG	516	12X18	105.92	Allotted	80% Amuont Balance
4	HIG	517	12X18	105.92	Allotted	80% Amuont Balance
5	HIG	518	12X18	105.92	Sale deed
6	HIG	519	12X18	105.92	Allotted	Sale deed yet to be executed
7	HIG	520	12X18	105.92	Allotted	80% Amuont Balance
8	HIG	521	12X18	105.92	Allotted	80% Amuont Balance
9	HIG	522	12X18	105.92	Sale deed
10	HIG	523	12X18	105.92	Sale deed
11	MIG(Page-2)	204	12X18	105.92	Sale deed
12	HIG	205	12X18	105.92	Vacant
13	HIG	206	12X18	105.92	To be Allotted	20% Amuont Paid
14	HIG	207	12X18	105.92	To be Allotted	20% Amuont Paid
15	HIG	208	12X18	105.92	To be Allotted	20% Amuont Paid
16	HIG	209	12X18	105.92	Vacant
17	HIG	210	12X18	105.92	Vacant
18	HIG	211	12X18	105.92	Vacant
19	HIG	212	12X18	105.92	To be Allotted	20% Amuont Paid
20	HIG	215	12X18	105.92	Vacant
21	HIG	216	12X18	105.92	Vacant
22	HIG	217	12X18	105.92	Vacant
23	HIG	218	12X18	105.92	Vacant
24	HIG	219	12X18	105.92	Vacant
25	HIG	220	12X18	105.92	Vacant

Handwritten signature/initials

Handwritten signature: H. Seetharam

26	MIG(Page-3)	593	12X18	105.92	Vacant
27	HIG	594	12X18	105.92	Vacant
28	HIG	595	12X18	105.92	Vacant
29	HIG	596	12X18	105.92	Vacant
30	HIG	597	12X18	105.92	Vacant
Total		30				

P. J.

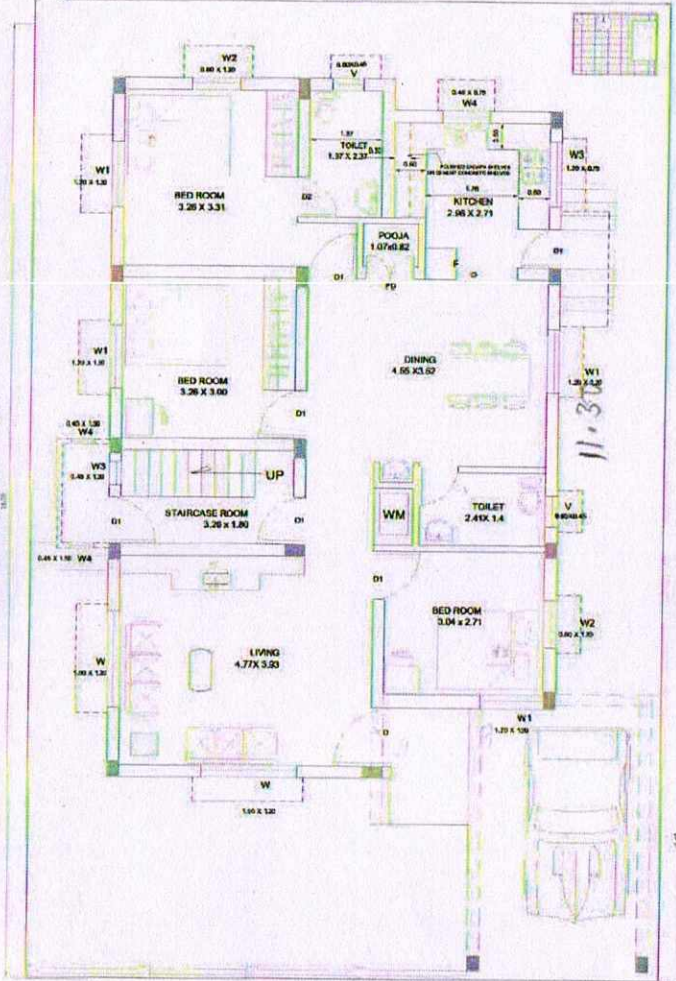
S. S. Seefur

PRODUCED BY AN AUTODESK EDUCATIONAL PRODUCT

PRODUCED BY AN AUTODESK EDUCATIONAL PRODUCT

PRODUCED BY AN AUTODESK EDUCATIONAL PRODUCT

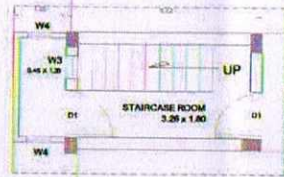
W HIG (12M X 18M) EAST
S - N
E



GROUND FLOOR PLAN - NORTH BY ROAD

BUILTUP AREA : 110 Sqm

OPEN TERRACE



SCHEDULE OF OPENINGS

SL. NO.	TYPE	DESCRIPTION	SIZE	QTY IN Nos.	FF
1.	D	DOOR	1.10 X 2.10	1	
2.	D1	DO	0.90 X 2.10	7	1
3.	D2	DO	0.75 X 2.10	3	
4.	D3	DO	0.58 X 2.10	1	
5.	O	OPENING	0.90 X 2.10	1	
6.	D1	OPENING	1.00 X 2.10	1	
7.	D2	OPENING	1.20 X 2.10	1	
8.	W	WINDOWS	1.60 X 1.20	2	
9.	W1	DO	1.20 X 1.20	3	
10.	W2	DO	0.90 X 1.20	2	
11.	W3	DO	1.20 X 0.75	1	
12.	W4	DO	0.45 X 0.75	3	
13.	V	VENTILATORS	0.90 X 0.45	3	

AREA STATEMENT

PLOT AREA : 12M X 18M

BUILTUP AREA : 105.92 Sqm (1138.64 Sq Ft)

TYPICAL
H.L.G.

GROUND FLOOR PLAN

PROJECT

PROPOSED FORMATION OF HOUSING LAYOUT
AT RAICHUR GROWTH CENTER, RAICHUR CITY

VASTHUSHILPA
ARCHITECT & ENGINEER
#36/26, 1st FLOOR, COUGL COMPLEX
SAMPIGE ROAD, BANGALORE-3
Mob-9866037715
Phone-080-41524250

DRAWING IS GOOD FOR CONSTRUCTION

NOT TO SCALE

ORIENTATION

DRG NO. - 3

W
S - N
E

NOTE:
ALL DIMENSIONS IN METERS

[Signature]
AEB
KIADB, Raichur

DDO
KIADB, Raichur

[Signature]
DO
KIADB, Raichur

JOTP
KIADB, Bangalore

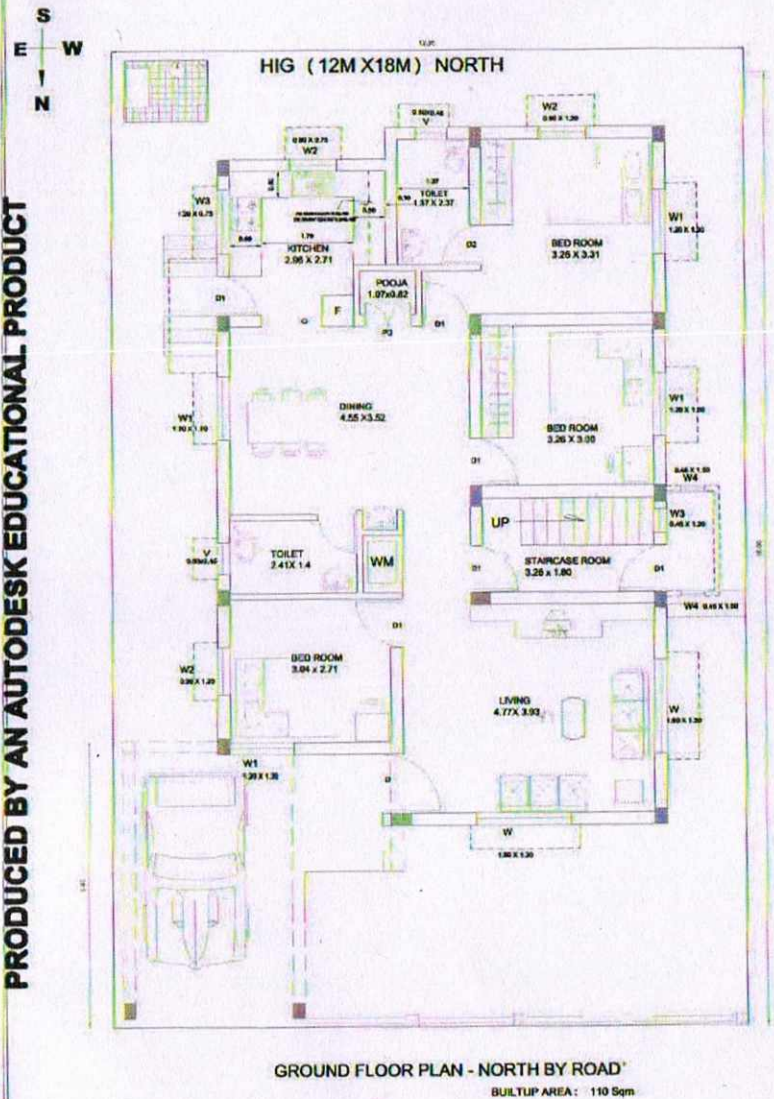
C.E / CDO
KIADB Bangalore

CEO/EF
KIADB Bangalore

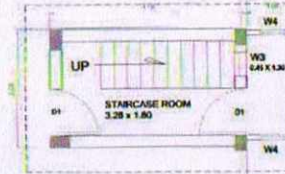
PRODUCED BY AN AUTODESK EDUCATIONAL PRODUCT

PRODUCED BY AN AUTODESK EDUCATIONAL PRODUCT

PRODUCED BY AN AUTODESK EDUCATIONAL PRODUCT



OPEN TERRACE



SCHEDULE OF OPENINGS

SL. NO.	TYPE	DESCRIPTION	SIZE	QTY IN Nos.	FF
1.	D	DOOR	1.10 X 2.10	3	
2.	D1	DO	0.85 X 2.10	7	1
3.	D2	DO	0.75 X 2.10	5	
4.	D3	DO	0.90 X 2.10	1	
5.	O	OPENING	0.30 X 2.10	1	
6.	O1	OPENING	1.00 X 2.10	1	
7.	O2	OPENING	1.20 X 2.10	1	
8.	W	WINDOWS	1.50 X 1.30	2	
9.	W1	DO	1.20 X 1.30	3	
10.	W2	DO	0.50 X 1.30	2	
11.	W3	DO	1.20 X 0.75	1	
12.	W4	DO	0.45 X 0.75	3	
13.	V	VENTILATORS	0.90 X 0.45	3	

AREA STATEMENT

PLOT AREA : 1250 X 180M

BUILTUP AREA : 105.92 Sqm (1138.64 Ss)

TYPICAL:
HIG GROUND FLOOR PLAN

PROJECT
PROPOSED FORMATION OF HOUSING LAYOUT
AT RAICHUR GROWTH CENTRE, RAICHUR CITY

VASTHUSHILPA
ARCHITECT & ENGRG
KIMMUR 36 FLOOR, OOLKOE COMPLEX,
SAMPUR ROAD, BANGALORE-3,
Mob: 9000337715
Phone: 000-41524250

DRAWING IS GOOD FOR CONSTRUCTION

NOT TO SCALE

ORIENTATION

DRG NO. - 3



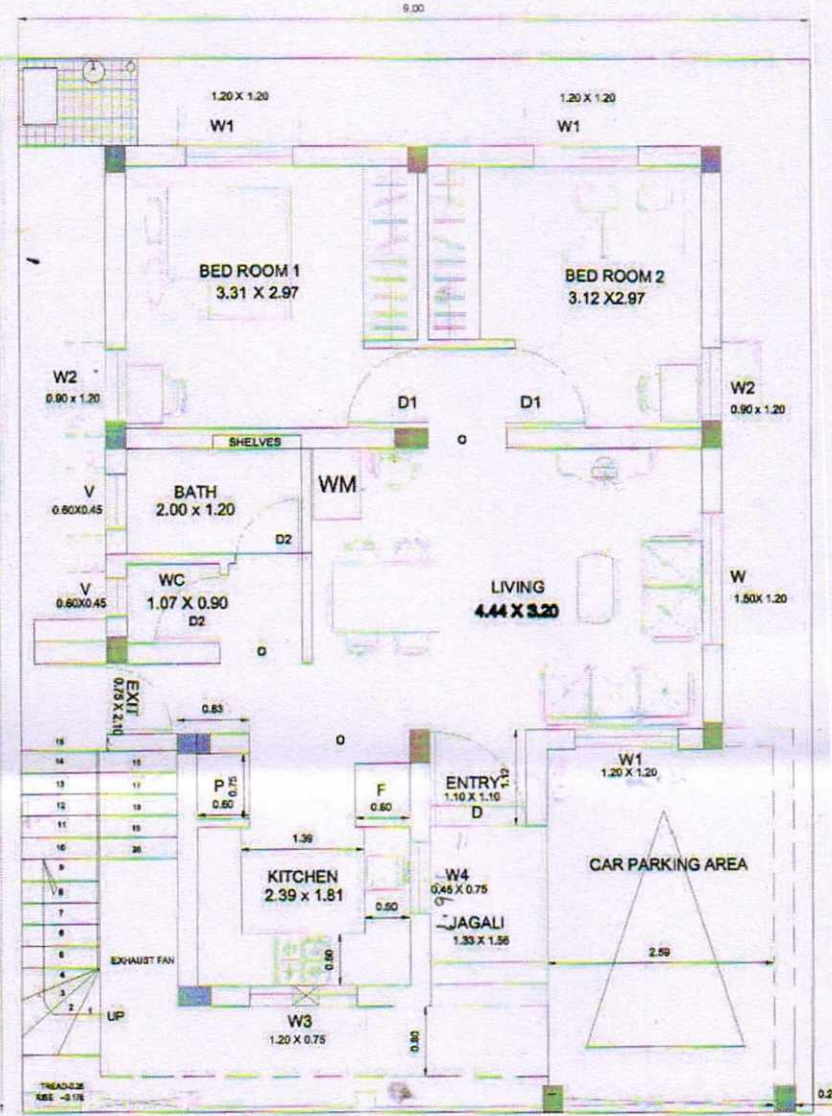
NOTE:
ALL DIMENSIONS IN METERS

AEE KIADB, Raichur	DDO KIADB, Raichur	DO KIADB, Raichur	JOTP KIADB, Bangalore	C.E / CDO KIADB Bangalore	CED/EP KIADB Bangalore

PRODUCED BY AN AUTODESK EDUCATIONAL PRODUCT

PRODUCED BY AN AUTODESK EDUCATIONAL PRODUCT

LIG (9M X 12M)



GROUND FLOOR PLAN - EAST BY ROAD

SCHEDULE OF OPENINGS

TYPE	DESCRIPTION	SIZE	QTY in Nos.
	DOOR	1.10 X 2.10	1
	DO	0.9 X 2.10	2
	DO	0.75 X 2.10	3
	OPENING	0.90 X 2.10	3
	WINDOWS	1.50 X 1.20	1
W1	DO	1.20 X 1.20	3
W2	DO	0.90 X 1.20	2
8. W3	DO	1.20 X 0.75	1
9. W4	DO	0.45 X 0.75	1
10. V	VENTILATORS	0.60 X 0.45	2

AREA STATEMENT

PLOT AREA : 9M X 12M

BUILT UP AREA : 56.54 Sqm

TYPICAL

LIG

GROUND FLOOR PLAN

PROJECT:

PROPOSED FORMATION OF HOUSING LAYOUT
AT RAICHUR GROWTH CENTRE, RAICHUR CITY

VASTHUSHILPA

ARCHITECT & ENGG

#366/26, 1st FLOOR, COOLIGE COMPLEX,

SAMPUR ROAD, BANGALORE-3

Mob-9986037715

Phone-080-41524250

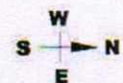
DRAWING IS GOOD FOR CONSTRUCTION

NOT TO SCALE

DRG NO. - 3

NOTE:
ALL DIMENSIONS IN METERS

ORIENTATION



AEZ
KIADB, Raichur

DDO
KIADB, Raichur

DO
KIADB, Raichur

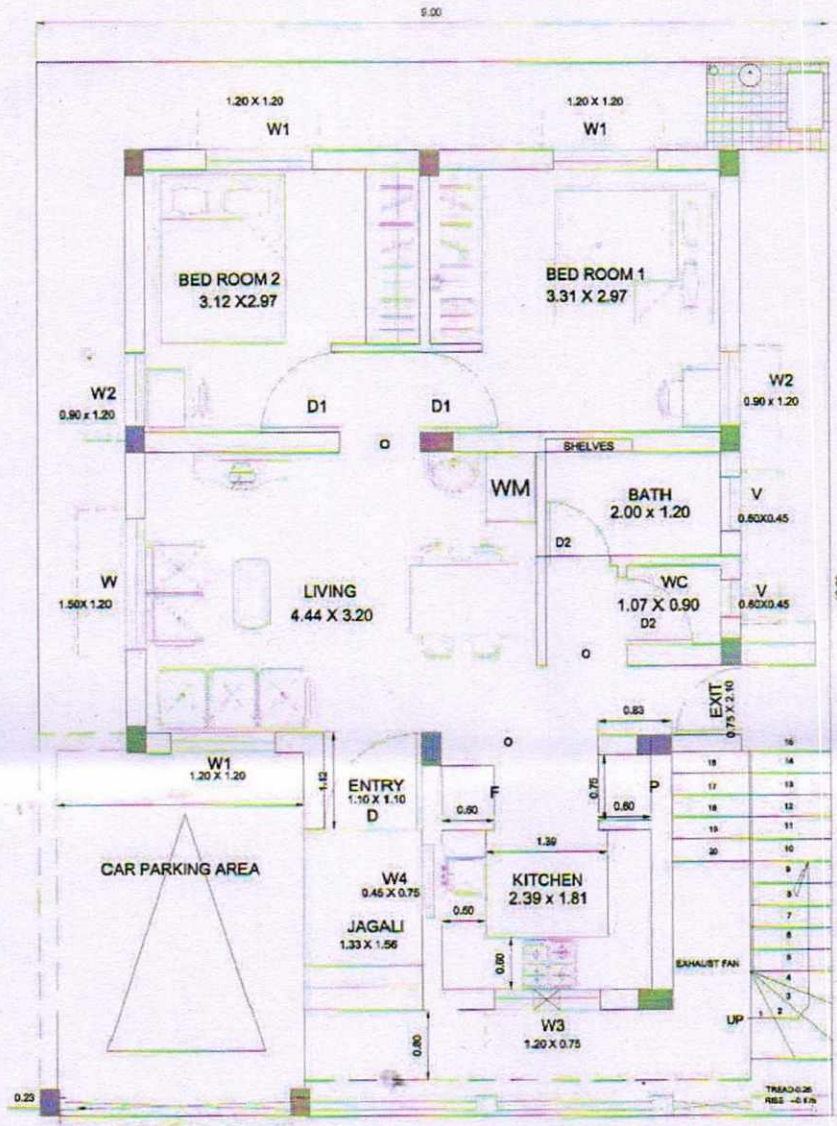
JDTP
KIADB, Bangalore

C.E / CDO
KIADB Bangalore

CEO/EF
KIADB Bangalore

LIG (9M X 12M) NORTH

PRODUCED BY AN AUTODESK EDUCATIONAL PRODUCT



GROUND FLOOR PLAN - NORTH BY ROAD

SCHEDULE OF OPENINGS

TYPE	DESCRIPTION	SIZE	QTY in Nos.
	DOOR	1.10 X 2.10	1
	DO	0.9 X 2.10	2
	DO	0.75 X 2.10	3
	OPENING	0.90 X 2.10	3
	WINDOWS	1.50 X 1.20	1
W1	DO	1.20 X 1.20	3
W2	DO	0.90 X 1.20	2
W3	DO	1.20 X 0.75	1
W4	DO	0.45 X 0.75	1
V	VENTILATORS	0.80 X 0.45	2

AREA STATEMENT

PLOT AREA : 9M X 12M

BUILT UP AREA : 86.64 Sqm

TYPICAL:

GROUND FLOOR PLAN

PROPOSED FORMATION OF HOUSING LAYOUT
AT RAICHUR GROWTH CENTRE, RAICHUR CITY

VASTHUSHILPA

ARCHITECT & ENGG
#399/26 1st FLOOR, COLIJE COMPLEX,
SAMPIGE ROAD, BANGALORE-3,
Mob-9986037715
Phone-080-41524250

DRAWING IS GOOD FOR CONSTRUCTION

NOT TO SCALE

ORIENTATION

DRG NO. - 3



NOTE:
ALL DIMENSIONS IN METERS

AEZ
KIADB, Raichur

DDO
KIADB, Raichur

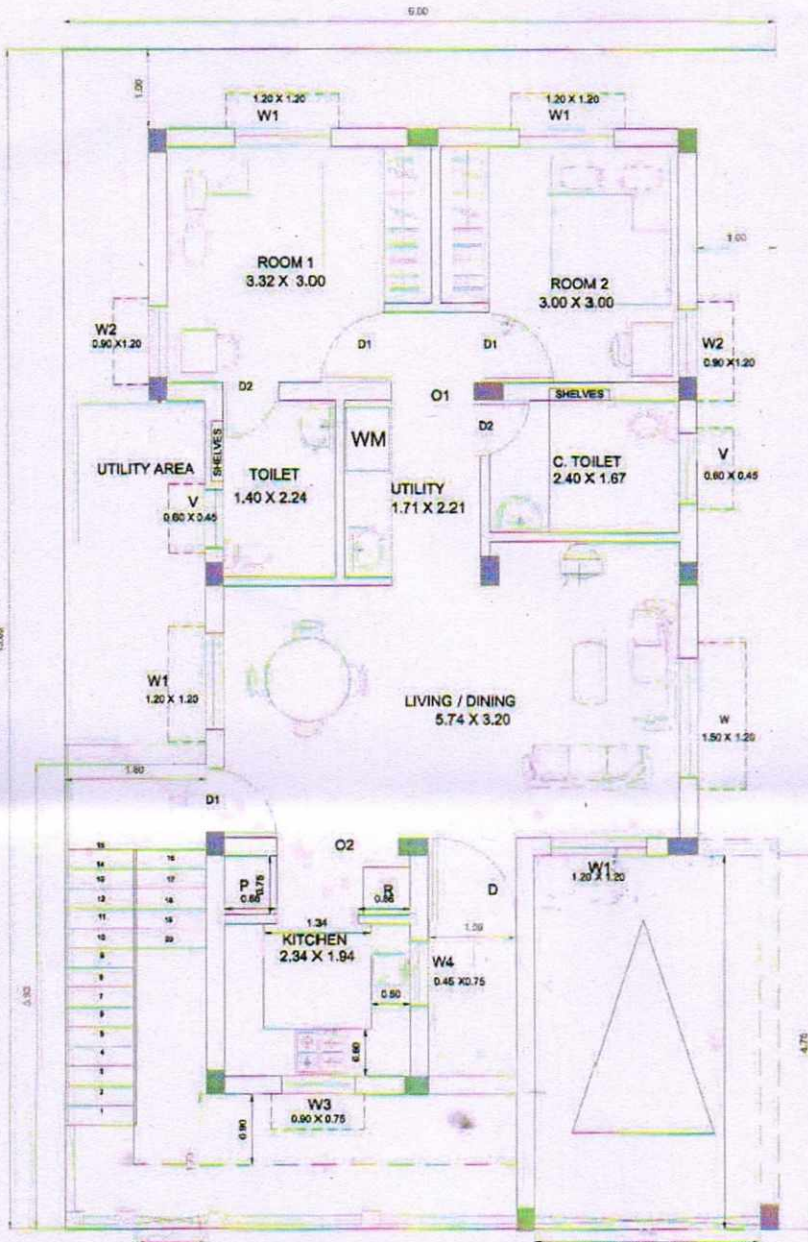
DO
KIADB, Raichur

JDTP
KIADB, Bangalore

C.E / CDO
KIADB Bangalore

CEO/EF
KIADB Bangalore

MIG (9M X 15M) EAST



SCHEDULE OF OPENINGS

SL.NO.	TYPE	DESCRIPTION	SIZE	QTY in Nos.
1.	D	DOOR	1.10 X 2.10	1
2.	D1	DO	0.90 X 2.10	3
3.	D2	DO	0.75 X 2.10	3
4.	D1	OPENING	1.10 X 2.10	1
5.	O2	OPENING	1.54 X 2.10	1
6.	W	WINDOWS	1.50 X 1.20	1
7.	W1	DO	1.20 X 1.20	4
8.	W2	DO	0.90 X 1.20	2
9.	W3	DO	1.20 X 0.75	1
10.	W4	DO	0.45 X 0.75	1
11.	V	VENTILATORS	0.50 X 0.45	2

PLOT AREA : 12M X 18M

BUILTUP AREA : 66.89 Sqm (719.06 SqFt)

TYPICAL:
M.I.G

GROUND FLOOR PLAN

PROJECT:

PROPOSED FORMATION OF HOUSING LAYOUT
AT RAICHUR GROWTH CENTRE, RAICHUR CITY

VASTHUSHILPA

ARCHITECT & ENGG
#396/25 1st FLOOR, OOLIGE COMPLEX
SAMPIGE ROAD, BANGALORE-3.
Mob-9966037715
Phone-080-41524250

DRAWING IS GOOD FOR CONSTRUCTION

NOT TO SCALE

ORIENTATION

DRG NO. - 3



NOTE:
ALL DIMENSIONS IN METERS

[Signature]

AEB
KIADB, Raichur

DDO
KIADB, Raichur

[Signature]

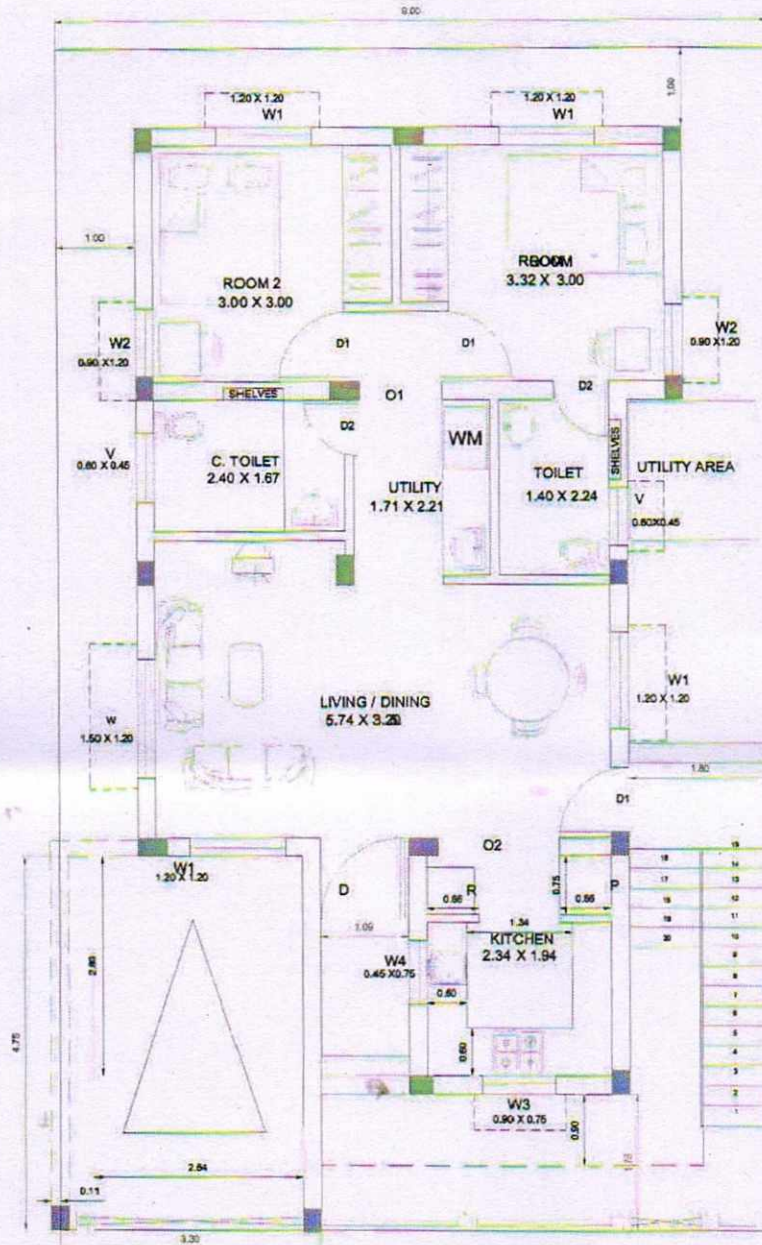
DO
KIADB, Raichur

JDTP
KIADB, Bangalore

C.E / CDO
KIADB Bangalore

CEO/EF
KIADB Bangalore

MIG (9M X 15M) NORTH



GROUND FLOOR PLAN - NORTH BY ROAD

SCHEDULE OF OPENINGS

S.NO.	TYPE	DESCRIPTION	SIZE	QTY In Nos.
1.	D	DOOR	1.80 X 2.10	1
2.	D1	DO	0.90 X 2.10	3
3.	D2	DO	0.75 X 2.10	3
4.	O1	OPENING	1.10 X 2.10	1
5.	O2	OPENING	1.94 X 2.10	1
6.	W	WINDOWS	1.50 X 1.20	1
7.	W1	DO	1.20 X 1.20	4
8.	W2	DO	0.90 X 1.20	2
9.	W3	DO	1.20 X 0.75	1
10.	W4	DO	0.45 X 0.75	1
11.	V	VENTILATORS	0.80 X 0.45	2

PLOT AREA : 12M X 10M

BUILTUP AREA : 66.89 Sqm (719.06 Sq Ft)

TYPICAL
M.I.G

GROUND FLOOR PLAN

PROJECT:

PROPOSED FORMATION OF HOUSING LAYOUT
AT RAICHUR GROWTH CENTRE, RAICHUR CITY

VASTHUSHILPA

ARCHITECT & ENGG
#396/20, 1st FLOOR, COOLIGE COMPLEX,
SAMPIGE ROAD, BANGALORE-3,
Mob-9566037715
Phone-080-41524250

DRAWING IS GOOD FOR CONSTRUCTION

NOT TO SCALE

ORIENTATION

DRG NO. - 3



NOTE:
ALL DIMENSIONS IN METERS

[Signature]
AEE
KIADB, Raichur

DDO
KIADB, Raichur

[Signature]
DO
KIADB, Raichur

JDTP
KIADB, Bangalore

C.E / CDO
KIADB Bangalore

CEO/EF
KIADB Bangalore

Details of Residential House of Vasanthnarsapura 3rd Phase Tumakuru District.

HIG HOUSES						
Sl No	Type Of Housing Tenament	Plot No	Plot Size (m)	Built Up area Sqmt	Staus (Allotted/Sale deed/To be Allotted)	Remarks
1	HIG	597	12X18	97.82	sale deed under proces	
2	HIG	596	12X18	97.82	To Be Allotted	
3	HIG	595	12X18	97.82	To Be Allotted	
4	HIG	594	12X18	97.82	To Be Allotted	
5	HIG	589	12X18	97.82	To Be Allotted	
6	HIG	588	12X18	97.82	To Be Allotted	
7	HIG	587	12X18	97.82	To Be Allotted	
8	HIG	586	12X18	97.82	To Be Allotted	
9	HIG	581	12X18	97.82	To Be Allotted	
10	HIG	580	12X18	97.82	To Be Allotted	
11	HIG	579	12X18	97.82	Allotted	
12	HIG	578	12X18	97.82	Allotted	
13	HIG	575	12X18	97.82	Allotted	
14	HIG	574	12X18	97.82	Allotted	
15	HIG	573	12X18	97.82	To Be Allotted	
16	HIG	572	12X18	97.82	To Be Allotted	
17	HIG	567	12X18	97.82	To Be Allotted	
18	HIG	566	12X18	97.82	To Be Allotted	
19	HIG	565	12X18	97.82	To Be Allotted	
20	HIG	564	12X18	97.82	To Be Allotted	
21	HIG	563	12X18	97.82	To Be Allotted	
22	HIG	562	12X18	97.82	To Be Allotted	
23	HIG	561	12X18	97.82	To Be Allotted	
24	HIG	560	12X18	97.82	To Be Allotted	
25	HIG	559	12X18	97.82	To Be Allotted	
26	HIG	558	12X18	97.82	To Be Allotted	
27	HIG	557	12X18	97.82	To Be Allotted	
28	HIG	556	12X18	97.82	To Be Allotted	
29	HIG	555	12X18	97.82	To Be Allotted	
30	HIG	554	12X18	97.82	To Be Allotted	
31	HIG	553	12X18	97.82	To Be Allotted	
32	HIG	552	12X18	97.82	To Be Allotted	
33	HIG	551	12X18	97.82	To Be Allotted	
34	HIG	550	12X18	97.82	To Be Allotted	
35	HIG	549	12X18	97.82	To Be Allotted	
36	HIG	548	12X18	97.82	sale deed exececuted	
37	HIG	545	12X18	97.82	To Be Allotted	
38	HIG	544	12X18	97.82	To Be Allotted	
39	HIG	43	12X18	97.82	To Be Allotted	
40	HIG	542	12X18	97.82	To Be Allotted	
41	HIG	541	12X18	97.82	To Be Allotted	
42	HIG	540	12X18	97.82	To Be Allotted	
43	HIG	539	12X18	97.82	To Be Allotted	
44	HIG	538	12X18	97.82	To Be Allotted	
45	HIG	537	12X18	97.82	To Be Allotted	
46	HIG	536	12X18	97.82	To Be Allotted	
47	HIG	535	12X18	97.82	To Be Allotted	
48	HIG	534	12X18	97.82	To Be Allotted	
49	HIG	533	12X18	97.82	To Be Allotted	
50	HIG	532	12X18	97.82	To Be Allotted	

MIG HOUSES						
Sl No	Type Of Housing Tenament	Plot No	Plot Size (m)	Built Up area Sqmt	Staus (Allotted/Sale deed/To be Allotted)	Remarks
1	MIG	511	9X15	73.20	To be Allotted	
2	MIG	510	9X15	73.20	To be Allotted	
3	MIG	509	9X15	73.20	To be Allotted	
4	MIG	474	9X15	73.20	To be Allotted	
5	MIG	473	9X15	73.20	To be Allotted	
6	MIG	472	9X15	73.20	To be Allotted	
7	MIG	471	9X15	73.20	To be Allotted	
8	MIG	470	9X15	73.20	To be Allotted	
9	MIG	469	9X15	73.20	To be Allotted	
10	MIG	468	9X15	73.20	To be Allotted	
11	MIG	467	9X15	73.20	To be Allotted	
12	MIG	466	9X15	73.20	To be Allotted	
13	MIG	465	9X15	73.20	To be Allotted	
14	MIG	464	9X15	73.20	To be Allotted	
15	MIG	463	9X15	73.20	To be Allotted	
16	MIG	462	9X15	73.20	To be Allotted	
17	MIG	461	9X15	73.20	To be Allotted	
18	MIG	460	9X15	73.20	To be Allotted	
19	MIG	459	9X15	73.20	To be Allotted	
20	MIG	458	9X15	73.20	To be Allotted	

VASANTHANARASAPURA 3rd PHASE INDUSTRIAL AREA LAYOUT

Sl No	Type Of Housing Tenament	Plot No	Plot Size (m)	Built Up area Sqmt(M2)	Staus (Allotted/Sale deed/To be Allotted)
1	LIG	420	9x12	52.39	To Be Allotted
2	LIG	421	9x12	52.39	To Be Allotted
3	LIG	422	9x12	52.39	To Be Allotted
4	LIG	423	9x12	52.39	To Be Allotted
5	LIG	424	9x12	52.39	To Be Allotted
6	LIG	425	9x12	52.39	To Be Allotted
7	LIG	426	9x12	52.39	To Be Allotted
8	LIG	427	9x12	52.39	To Be Allotted
9	LIG	428	9x12	52.39	To Be Allotted
10	LIG	429	9x12	52.39	To Be Allotted
11	LIG	430	9x12	52.39	To Be Allotted
12	LIG	431	9x12	52.39	To Be Allotted
13	LIG	432	9x12	52.39	To Be Allotted
14	LIG	433	9x12	52.39	To Be Allotted
15	LIG	434	9x12	52.39	To Be Allotted
16	LIG	435	9x12	52.39	To Be Allotted
17	LIG	436	9x12	52.39	To Be Allotted
18	LIG	394	9x12	52.39	To Be Allotted
19	LIG	395	9x12	52.39	To Be Allotted
20	LIG	397	9x12	52.39	To Be Allotted
21	LIG	398	9x12	52.39	To Be Allotted
22	LIG	396	9x12	52.39	To Be Allotted
23	LIG	393	9x12	52.39	To Be Allotted
24	LIG	392	9x12	52.39	To Be Allotted
25	LIG	391	9x12	52.39	To Be Allotted
26	LIG	390	9x12	52.39	To Be Allotted
27	LIG	389	9x12	52.39	To Be Allotted
28	LIG	388	9x12	52.39	To Be Allotted
29	LIG	387	9x12	52.39	To Be Allotted
30	LIG	386	9x12	52.39	To Be Allotted
31	LIG	385	9x12	52.39	To Be Allotted
32	LIG	384	9x12	52.39	To Be Allotted
33	LIG	383	9x12	52.39	To Be Allotted
34	LIG	382	9x12	52.39	To Be Allotted
35	LIG	345	9x12	52.39	To Be Allotted
36	LIG	346	9x12	52.39	To Be Allotted
37	LIG	347	9x12	52.39	To Be Allotted
38	LIG	348	9x12	52.39	To Be Allotted
39	LIG	349	9x12	52.39	To Be Allotted
40	LIG	350	9x12	52.39	To Be Allotted
41	LIG	351	9x12	52.39	To Be Allotted
42	LIG	352	9x12	52.39	To Be Allotted
43	LIG	353	9x12	52.39	To Be Allotted
44	LIG	354	9x12	52.39	To Be Allotted
45	LIG	355	9x12	52.39	To Be Allotted
46	LIG	356	9x12	52.39	To Be Allotted
47	LIG	357	9x12	52.39	To Be Allotted
48	LIG	358	9x12	52.39	To Be Allotted
49	LIG	359	9x12	52.39	To Be Allotted
50	LIG	360	9x12	52.39	To Be Allotted

KARNATAKA INDUSTRIAL AREAS DEVELOPMENT BOARD

General Terms and Conditions for e-auction of housing tenement

Only through e- procurement portal of Karnataka

(<https://kppp.karnataka.gov.in>)

Residential layouts

1. KIADB Residential Layout Area, Raichur City
2. KIADB Residential Layout Area, Vasanthanarasapura Industrial Area, Tumkuru
3. KIADB Housing Layout Area, Gamanagatti Industrial Area, Hubli-Dharwad City

General Terms and Conditions.

1. The auction purchaser should be a Citizen of India.
2. Address proof: Any one of the following documents attested by a Gazetted Officer/Notary / Embassy Office (in the case of NRIs) shall be uploaded.
 - a) Voter ID,
 - b) Driving License,
 - c) Passport,
 - d) Unique Id Number (Aadhaar),
3. Uploading of PAN Card in e-auction portal is compulsory (Should be attested by Gazetted Officer/Notary/Attested by Embassy Office in case of N.RI).
4. Signature & Photo Identity should be uploaded on the e-Auction portal (Attested by a Gazetted Officer/Notary/Embassy Office (in case of N.RI's)]. Please download the prescribed format.
5. The Bidder/Auction purchaser shall mention correct e-Mail address, mobile number and landline number while participating in the e-Auction. The bidder whose name is registered in the e-procurement is final and house building will not be transferred to any other name.
6. Minors/persons without computer knowledge are eligible to participate in the auction through their guardians or friends. While doing so, the name and related documents of only the person purchasing the property must be submitted / uploaded on the e-procurement Auction portal while participating in the e-Auction.
7. The Bidder/Auction purchasers who desire to have the housing tenements/sites jointly registered should upload the details of the persons concerned on the e-portal. The relationship of such person should be clearly mentioned.
8. Partnership firm may participate in the auction. However, the partnership firm should have been registered in India before participating in the auction.
9. EMD amount is fixed at **Rs.1.00 lakh (Rupees one Lakh only) per housing tenement** and this amount along with the e-Auction fee should be remitted as mentioned on the e-Procurement portal. This amount should not be remitted to the KIADB account as the EMD amount is maintained by e-procurement.

10. All legal proceedings in respect of the auction housing tenement/housing sites are subject to the Courts located in the respective jurisdictional District of Residential layout/Industrial Areas and Bengaluru city.
11. KIADB reserves the right to withdraw the Housing tenements/sites notified for auction at any time during auction period without assigning any reasons.
12. KIADB reserves the right to accept or reject the bid made by the successful bidder without assigning any reasons.
13. Advice letters will be sent by e-Mail to successful bidders (highest bidders) to remit 25% of the total cost after deducting EMD amount of Rs.1.00 Lakh for housing tenement within 72 hours (excluding bank holidays if any) from the closing time of e-Auction to the below-mentioned KIADB Bank Account; and the challan for remittance should be submitted to the Accounts Officer, KIADB Head Office, 5th floor, East Wing, Khanija Bhavan, Race Course Road, Bengaluru- 560001.
 - a. Account Holder Name:-KIADB, Bengaluru.
 - b. Account No : 510341000075865
 - c. Branch Name : Race Course Road
 - d. Mode of Payment : RTGD/NEFT
 - e. IFSC Code No : UBIN0930911
 - f. Mode of Payment:- RTGS/NFT.
14. EMD amount of unsuccessful bidders will be released to their Account within one month from the last date of auction.
15. Where 25% of the total cost is not remitted within 72 hours by the successful bidders (highest bidders) or where 25% of the total cost is remitted after the prescribed time, the EMD amount of Rs.1.00 lakh for housing tenement shall be forfeited by the KIADB
16. Successful bidders/Auction Purchasers after remitting 25% of the final bid amount should pay the balance 75% amount within 60 days of receiving the allotment letter from KIADB.
17. Bidder / Auction purchasers shall abide the rules of KIADB prescribed for allotment of housing tenement /site.
18. While participating in the e-auction, in case if there is only one bidder, the bid amount should exceed the fixed basic price of the housing tenement/housing site by a minimum of 5%. However, KIADB reserves the right to accept or reject any bid without assigning any reasons.
19. Housing tenements will be auctioned on "As in where is Basis". There is no provision for change of housing tenement.
20. Bidder/Auction Purchaser has to read all the terms and conditions before bidding and shall participate accordingly.
21. The Bidder/Auction Purchaser can bid for any number of housing tenements, provided submitting separate EMD for each housing tenement.
22. For more general terms and conditions visit our **website: Kiadb.in**

Sd/-
CEO&EM,
KIADB